

Tentec® LED

The economical approach to LED illumination



LED

50.000 hours lifetime
at a luminous flux of 70% (L70)

Colour temperature 2700 K,
3000 K or 4000 K

1-10 V and DALI optional

Post anodised reflector made of
pure aluminium AL 99.98
for highest light output ratio

Multiple point screw mounting

via hollow wall box for a quick mounting in
ceiling thicknesses 1-25 mm

Protection class IP 44 in closed ceiling systems

Colour rendering index CRI > 80, CRI > 90 on request

Suitable for VDU workstations according to LG7,
glare limitation $65^\circ < 1000 \text{ cd/m}^2$

WILA

LED

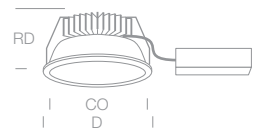
Tentec® Recessed Luminaires

Downlights, Downlights with higher protection IP 44



Wattage LED neutral white	Reflector size, Dimension, Weight						System photometric data	Article number		
	R	R	CO	D	RD	kg		static	1-10V	DALI
4000 K, CRI > 80, please order the system ring or safety screen separately										
18 W	●		165	180	120	1.0	1)	TL26101-03-N	-D	-DD
25 W	●		165	180	120	1.0	1)	TL26102-03-N	-D	-DD
25 W		●	195	210	120	1.1	1)	TL26103-03-N	-D	-DD
37 W		●	195	210	130	1.3	1)	TL26104-03-N	-D	-DD
50 W		●	195	210	140	1.4	1)	TL26105-03-N	-D	-DD

Ordering example: TL26104-03-N-DD for DALI dimmable + 81001R18 for system ring
 Use index -N for neutralweiß (4000 K), -W for warm white (3000 K) or -S for super warm white (2700 K),
 current photometric data can be found on the Internet
 1) Photometric data depends on the Liteoptic



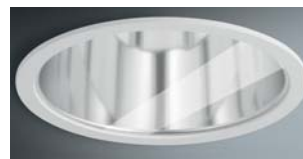
for luminaire modul	System ring IP 20							Article number
	D mm	kg	UGR	γ °	Llm	Llm/W	No. of Lum.	
TL26101-03	180	0.1	22	75	1130	59	0.12	81001R15
TL26102-03	180	0.1	23	75	1680	65	0.08	81001R15
TL26103-03	210	0.1	23	70	1680	65	0.08	81001R18
TL26104-03	210	0.1	24	75	2190	56	0.06	81001R18
TL26105-03	210	0.1	25	75	3160	60	0.04	81001R18



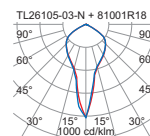
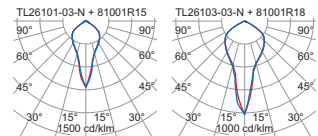
Filigree system ring with a bayonet fixing, tool free installation, white, IP 20

Order the system ring or safety screen separately

for luminaire modul	Safety screen IP 44							Article number
	D mm	kg	UGR	γ °	Llm	Llm/W	No. of Lum.	
TL26101-03	180	0.2	22	75	1090	57	0.12	81005R15
TL26102-03	180	0.2	23	75	1620	62	0.08	81005R15
TL26103-03	210	0.3	23	70	1620	62	0.08	81005R18
TL26104-03	210	0.3	24	75	2110	54	0.06	81005R18
TL26105-03	210	0.3	25	75	3040	57	0.04	81005R18



Clear tempered safety glass, supporting ring white, IP 44 in closed ceiling systems



IP 44 with closed Liteoptics and in closed ceiling systems
 ENEC/VDE in preparation



for luminaire modul	Concrete mounting box				Article number
	CO mm	RD mm	L mm	H mm	
TL26101-03	165	120	360	40	88038R15
TL26102-03	165	120	360	40	88038R15
TL26103-03	195	120	360	40	88038R18
TL26104-03	195	150	360	40	88045R18
TL26105-03	195	150	360	40	88045R18