

Tentec® LED

The economical approach to LED illumination



LED

50.000 hours lifetime
at a luminous flux of 70% (L70)

Colour temperature 2700 K,
3000 K or 4000 K

1-10 V and DALI optional

Post anodised reflector made of
pure aluminium AL 99.98
for highest light output ratio

Multiple point screw mounting

via hollow wall box for a quick mounting in
ceiling thicknesses 1-25 mm

Protection class IP 44 in closed ceiling systems

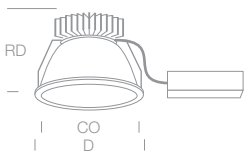
Colour rendering index CRI > 80, CRI > 90 on request

Suitable for VDU workstations according to LG7,
glare limitation $65^\circ < 1000 \text{ cd/m}^2$

WILA



LED Tentec® Recessed Luminaires Downlights, Downlights with higher protection IP 44



Wattage LED neutral white 4000 K, CRI > 80, please order the system ring or safety screen separately	Reflector size, Dimension, Weight						System photometric data	Article number		
	R	R	CO	D	RD	kg		static	1-10V	DALI
18 W	●		165	180	160	1.1	1)	TL26001-03-N	-D	-DD
25 W	●		165	180	160	1.1	1)	TL26002-03-N	-D	-DD
25 W		●	195	210	160	1.1	1)	TL26003-03-N	-D	-DD
37 W		●	195	210	170	1.4	1)	TL26004-03-N	-D	-DD
50 W		●	195	210	180	1.7	1)	TL26005-03-N	-D	-DD

Ordering example: TL26004-03-N-DD for DALI dimmable + 81001R18 for system ring
Use index -N for neutralweiß (4000 K), -W for warm white (3000 K) or -S for super warm white (2700 K),
current photometric data can be found on the Internet
1) Photometric data depends on the Liteoptic

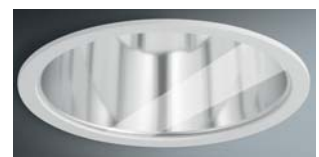
! Order the system ring or safety screen separately

for luminaire modul	System ring IP 20							
	D mm	kg	UGR	γ °	Llm	Llm/W	No. of Lum.	Article number
TL26001-03	180	0.1	17	65	1110	58	0.11	81001R15
TL26002-03	180	0.1	16	65	1640	63	0.08	81001R15
TL26003-03	210	0.1	17	65	1640	63	0.08	81001R18
TL26004-03	210	0.1	18	65	2130	55	0.06	81001R18
TL26005-03	210	0.1	18	65	3160	60	0.04	81001R18

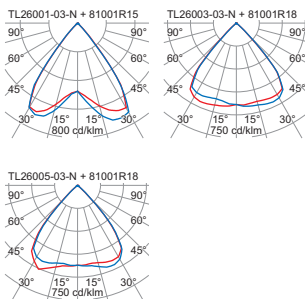


Filigree system ring with a bayonet fixing, tool free installation, white, IP 20

for luminaire modul	Safety screen IP 44							
	D mm	kg	UGR	γ °	Llm	Llm/W	No. of Lum.	Article number
TL26001-03	180	0.2	17	65	1070	56	0.11	81005R15
TL26002-03	180	0.2	16	65	1580	61	0.08	81005R15
TL26003-03	210	0.3	17	65	1580	61	0.08	81005R18
TL26004-03	210	0.3	18	65	2050	53	0.06	81005R18
TL26005-03	210	0.3	18	65	3050	58	0.04	81005R18



Clear tempered safety glass, supporting ring white, IP 44 in closed ceiling systems



for luminaire modul	Concrete mounting box				Article number
	CO mm	RD mm	L mm	H mm	
TL26001-03	165	165	480	35	88080R15
TL26002-03	165	165	480	35	88080R15
TL26003-03	195	165	480	35	88080R18
TL26004-03	195	180	594	35	88083R18
TL26005-03	195	180	594	35	88083R18

IP 44 with closed Liteoptics and in closed ceiling systems
ENEC/VDE in preparation



LED

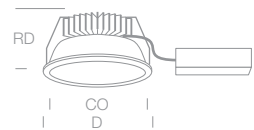
Tentec® Recessed Luminaires

Downlights, Downlights with higher protection IP 44



Wattage LED neutral white	Reflector size, Dimension, Weight						System photometric data	Article number		
	R	R	CO	D	RD	kg		static	1-10V	DALI
4000 K, CRI > 80, please order the system ring or safety screen separately										
18 W	●		165	180	120	1.0	1)	TL26101-03-N	-D	-DD
25 W	●		165	180	120	1.0	1)	TL26102-03-N	-D	-DD
25 W		●	195	210	120	1.1	1)	TL26103-03-N	-D	-DD
37 W		●	195	210	130	1.3	1)	TL26104-03-N	-D	-DD
50 W		●	195	210	140	1.4	1)	TL26105-03-N	-D	-DD

Ordering example: TL26104-03-N-DD for DALI dimmable + 81001R18 for system ring
 Use index -N for neutralweiß (4000 K), -W for warm white (3000 K) or -S for super warm white (2700 K),
 current photometric data can be found on the Internet
 1) Photometric data depends on the Liteoptic



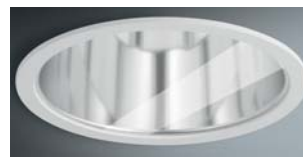
for luminaire modul	System ring IP 20							Article number
	D mm	kg	UGR	γ °	Llm	Llm/W	No. of Lum.	
TL26101-03	180	0.1	22	75	1130	59	0.12	81001R15
TL26102-03	180	0.1	23	75	1680	65	0.08	81001R15
TL26103-03	210	0.1	23	70	1680	65	0.08	81001R18
TL26104-03	210	0.1	24	75	2190	56	0.06	81001R18
TL26105-03	210	0.1	25	75	3160	60	0.04	81001R18



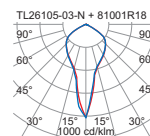
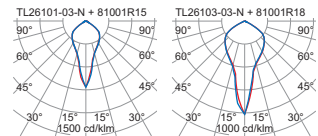
Filigree system ring with a bayonet fixing, tool free installation, white, IP 20

Order the system ring or safety screen separately

for luminaire modul	Safety screen IP 44							Article number
	D mm	kg	UGR	γ °	Llm	Llm/W	No. of Lum.	
TL26101-03	180	0.2	22	75	1090	57	0.12	81005R15
TL26102-03	180	0.2	23	75	1620	62	0.08	81005R15
TL26103-03	210	0.3	23	70	1620	62	0.08	81005R18
TL26104-03	210	0.3	24	75	2110	54	0.06	81005R18
TL26105-03	210	0.3	25	75	3040	57	0.04	81005R18



Clear tempered safety glass, supporting ring white, IP 44 in closed ceiling systems

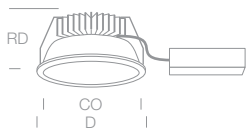


for luminaire modul	Concrete mounting box				Article number
	CO mm	RD mm	L mm	H mm	
TL26101-03	165	120	360	40	88038R15
TL26102-03	165	120	360	40	88038R15
TL26103-03	195	120	360	40	88038R18
TL26104-03	195	150	360	40	88045R18
TL26105-03	195	150	360	40	88045R18

IP 44 with closed Liteoptics and in closed ceiling systems
 ENEC/VDE in preparation



LED Tentec® Recessed Luminaires Downlights with Liteoptic



Wattage LED neutral white	Reflector size, Dimension, Weight						System photometric data	Article number		
	R	R	CO	D	RD	kg		static	1-10V	DALI
18 W	15	18	mm	mm	mm	kg				
25 W										
25 W										
37 W										
50 W										

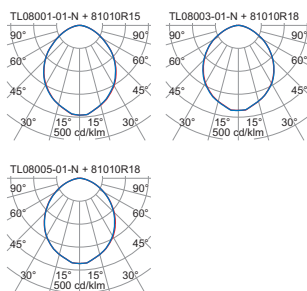
4000 K, CRI > 80, please order the diffusing screen separately
 Ordering example: TL08004-01-N-DD for DALI dimmable + 81010R18 for diffusing screen
 Use index -N for neutralweiß (4000 K), -W for warm white (3000 K) or -S for super warm white (2700 K),
 current photometric data can be found on the Internet
 1) Photometric data depends on the Liteoptic

! Order the diffusing screen separately

for luminaire modul	Diffusing screen IP 44							Article number
	D mm	kg	UGR	γ °	Llm	Llm/W	No. of Lum.	
TL08001-01	180	0.2	25	90	1050	55	0.13	81010R15
TL08002-01	180	0.2	27	90	1550	60	0.09	81010R15
TL08003-01	210	0.3	25	90	1550	60	0.09	81010R18
TL08004-01	210	0.3	26	90	2030	52	0.07	81010R18
TL08005-01	210	0.3	28	90	2930	55	0.05	81010R18



Tempered safety glass for a soft dispersion of light in the room, supporting ring white, IP 44 in closed ceiling system



for luminaire modul	Concrete mounting box				Article number
	CO mm	RD mm	L mm	H mm	
TL08001-01	165	120	360	40	88038R15
TL08002-01	165	120	360	40	88038R15
TL08003-01	195	120	360	40	88038R18
TL08004-01	195	150	360	40	88045R18
TL08005-01	195	150	360	40	88045R18

IP 44 with closed Liteoptics and in closed ceiling systems
 ENEC/VDE in preparation



WILA Lighting Limited 8-10 The Quadrangle Grove Technology Park
 Wantage Oxfordshire OX12 9FA
 Tel. +44 (0)1235 773500 Fax +44 (0)1235 773533
 Email wila@wila.co.uk www.wila.com



A2427-0811