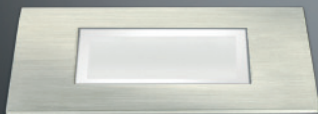


LED E Connect® Nero Accent
Wall- and Floor Luminaires
for architectural Accentuation



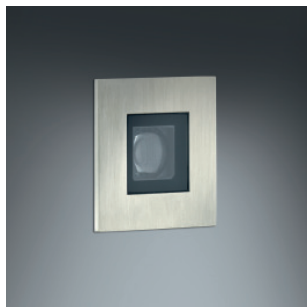
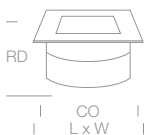
WILA

LED E Connect® Nero Accent Wall- and Floor Luminaires



Floor mounted, satin stainless steel finish

! Order the gear box separately



Wall mounted, high polish chrome finish



Round wall cut-out for square luminaires provide an easy mounting and adjustment.

Lamp, Wattage	Reflector size, Dimension, Weight							System photometric data			Article number	
	Q 01	Q 03	Q 05	CO mm	L x W mm	RD mm	kg	Llm	lm/W Lum. ¹⁾	No. Lum.	static	1-10V

3000 K, CRI > 80

Satin stainless steel finish

Cover clear, reflector black

1,1 W ($\alpha = 60^\circ$)	■			32	38	45	0.1	53	-	-	EL96001-76-W	-	-
1,1 W ($\alpha = 88^\circ$)	■			32	38	45	0.1	42	-	-	EL96002-76-W	-	-
2,2 W		■		51	60	45	0.2	100	-	-	EL96003-76-W	-	-
3,3 W			■	68	78	45	0.4	150	-	-	EL96004-76-W	-	-

Cover matt, reflector white

1,1 W	■			32	38	45	0.1	23	-	-	EL98002-71-W	-	-
2,2 W		■		51	60	45	0.2	63	-	-	EL98003-71-W	-	-
3,3 W			■	68	78	45	0.4	95	-	-	EL98004-71-W	-	-

Cover clear, asymmetric, reflector black

2,2 W		■		51	60	45	0.2	34	-	-	EL97003-78-W	-	-
3,3 W			■	68	78	45	0.4	37	-	-	EL97004-78-W	-	-

Use index -W for warm white (3000 K) or -N for neutral white (4000 K)

Use index -71/-76/-78 for cover ring satin stainless steel finish or -21/-26/-28 for cover ring high polish chrome finish

1) System efficiency depends on the number of luminaires at the driver

LED Recessed Wall and Floor mounted Luminaires

Wide range with round and square luminaires. Recessed wall and floor mounted luminaires draw the attention to architectural features. LED recessed wall mounted luminaires are excellent suitable for an efficiency step lighting.

Lighting technology

- Colour rendering index CRI > 80
- Colour temperature 3000 or 4000 K
- 50.000 h lifetime (L70)
- Asymmetrical version for step lighting
- LED colour finish optional

Luminaire housing

- Light proof housing made of die cast zinc
- Surface satin stainless steel or high polish chrome finish
- Tempered safety glass, clear or matt
- Protection class IP 67
- max. capacity 500 kg

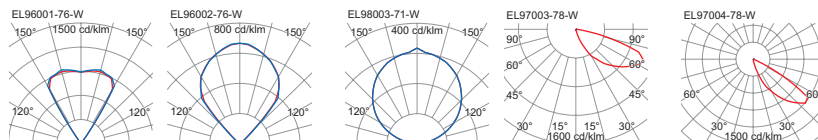
Ballast and electrical connection

- LED gear box to be ordered separately, static, 1-10 V or DALI dimmable

Installation instructions and maintenance

- Round cut-outs also for square luminaires for an easy adjustment
- Identical version for wall and floor luminaires
- Suitable to assemble in raised floors and walls
- Comprehensive range of accessories for screed of concrete floors

ENEC/VDE in preparation

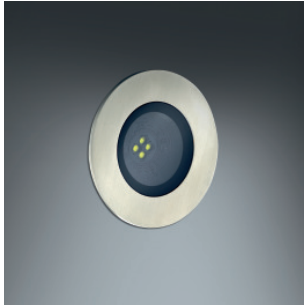
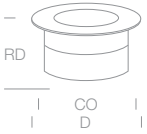


LED E Connect® Nero Accent Wall- and Floor Luminaires

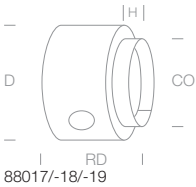


Floor mounted, satin stainless steel finish

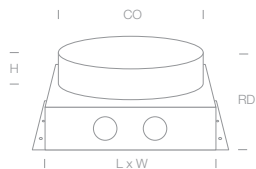
! Order the gear box separately



Wall mounted, high polish chrome finish



Wall plaster box
Diameter D 80 mm
Height H 15 mm
Recessed Depth RD 65 mm
Wall cut-out CO 34/54/69 mm



88015
Under floor box
Length x Width 157 x 135 mm
Height H 70 - 85 mm
Recessed Depth RD 113 - 128 mm
Floor cut-out CO 119 mm

Lamp / Wattage	Reflector size, Dimension, Weight							System photometric data			Article number	
	R 01	R 03	R 05	CO mm	D mm	RD mm	kg	Llm	lm/W Lum. ¹⁾	No. Lum.	static	1-10V

3000 K, CRI > 80

Satin stainless steel finish
Cover clear, reflector black

1,1 W ($\alpha = 60^\circ$)	●			32	38	45	0.1	53	-	-	EL86001-76-W	-	-
1,1 W ($\alpha = 88^\circ$)	●			32	38	45	0.1	42	-	-	EL86002-76-W	-	-
2,2 W		●		51	60	45	0.2	100	-	-	EL86003-76-W	-	-
3,3 W			●	68	78	45	0.4	150	-	-	EL86004-76-W	-	-

Cover matt, reflector white

1,1 W	●			32	38	45	0.1	23	-	-	EL88002-71-W	-	-
2,2 W		●		51	60	45	0.2	63	-	-	EL88003-71-W	-	-
3,3 W			●	68	78	45	0.4	95	-	-	EL88004-71-W	-	-

Cover clear, asymmetric, reflector black

2,2 W		●		51	60	45	0.2	34	-	-	EL87003-78-W	-	-
3,3 W			●	68	78	45	0.4	37	-	-	EL87004-78-W	-	-

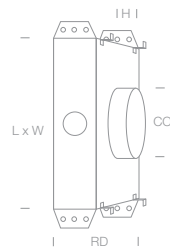
Use index -W for warm white (3000 K) or -N for neutral white (4000 K)

Use index -71/-76/-78 for cover ring satin stainless steel finish or -21/-26/-28 for cover ring high polish chrome finish

1) System efficiency depends on the number of luminaires at the driver

Attachments

LED gear box 350 mA	Number of luminaires per driver			Dimensions			Article number
	R/Q 01	R/Q 03	R/Q 05	L mm	W mm	H mm	
3 W, IP 20	1-2	1	-	56	40	21	83735
10 W, IP 20	3-8	2-4	1-2	115	34	19	83730
33 W, IP 20	3-16	2-8	1-4	179	31	32	83731
12 W, IP 65	1-10	1-5	1-3	122	36	25	83734
17 W, 0 - 10V, IP 20	5-14	3-7	2-4	103	67	30	83732
18 W, DALI, IP 20	5-14	3-7	2-4	179	31	32	83733



88090Rxx
Concrete mounting box
Length x Width 160 x 130 mm
Height H 20 mm
Recessed Depth RD 75 mm
Wall cut-out CO 34/54/69 mm

Mounting accessories

Mounting accessories	Article number
Underfloor box, screed, all-purpose R/Q 01/03/05 ¹⁾	88015
Adapter plate for underfloor box, suitable for R/Q01	88005R01
Adapter plate for underfloor box, suitable for R/Q03	88005R03
Adapter plate for underfloor box, suitable for R/Q05	88005R05
Wall plaster box, all-purpose R/Q01	88017
Wall plaster box, all-purpose R/Q03	88018
Wall plaster box, all-purpose R/Q05	88019
Concrete mounting box, suitable for R/Q01	88090R01
Concrete mounting box, suitable for R/Q03	88090R03
Concrete mounting box, suitable for R/Q05	88090R05

1) Additional to the underfloor box an adapter plate is required

WILA Lichttechnik GmbH
Postfach 26 11
D-58596 Iserlohn
Vödeweg 9-11
D-58638 Iserlohn

WILA Lighting Limited
8-10 The Quadrangle
Grove Technology Park
Wantage, Oxfordshire
OX12 9FA

Tel.: +49 (0)2371- 823-0
Fax: +49 (0)2371- 823-200
Email: wila@wila.com
www.wila.com

Tel.: +44 (0)1235 773500
Fax: +44 (0)1235 773533
Email: wila@wila.co.uk
www.wila.com



LED Recessed Floor Luminaires

for floor and wall mounting

3 mounting sizes **square**
and **round**

Asymmetrical version for
Step Lighting



Housing and heat sink made of
die cast Zinc

Colour temperature
3000/4000K

Spot-Characteristic due to lens technique,
or **wide beaming** with diffusing screen

Surface satin stainless steel
finish or high polish chrome
finish



Round mounting cut-out also
for square mounting form, for
an **easy adjustment**

Protection class **IP 67**

Tool-free mounting with metal clip and
additional vernier adjustment

Wide range of
concrete and **screed mounting**