

DALVIK

Your city will love them ...

.hess

DALVIK

Your city will love ...



DALVIK S



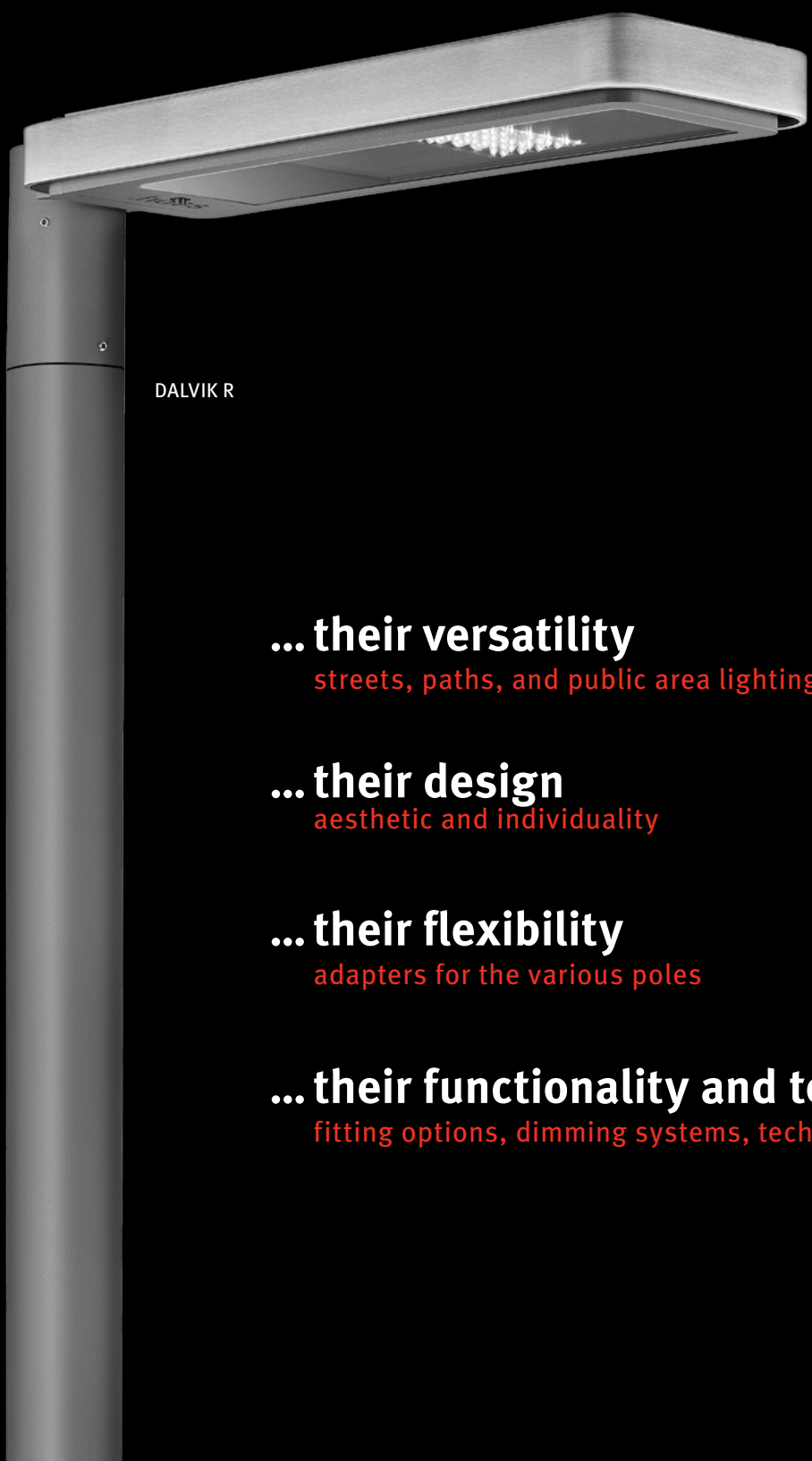
Be inspired!
www.hess.eu/dalvik



Product
winner



Focus Open 2014



DALVIK R

... their versatility

streets, paths, and public area lighting

from page 4 onwards

... their design

aesthetic and individuality

from page 6 onwards

... their flexibility

adapters for the various poles

Page 8

... their functionality and technology

fitting options, dimming systems, technical data

from page 9 onwards

DALVIK VERSATILITY

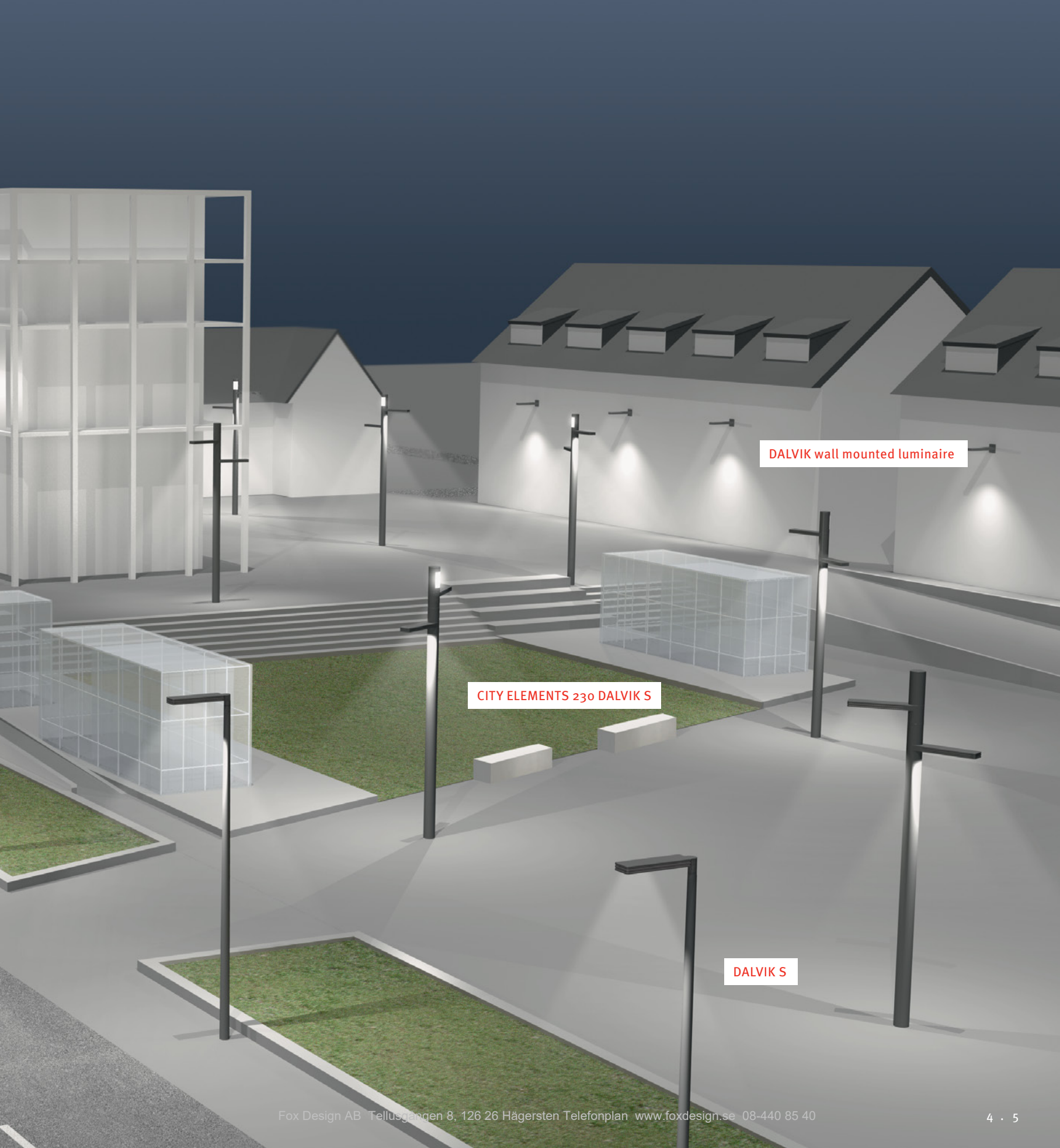
DALVIK. The LED design luminaire for all
urban design requirements – by Hess.

What are your requirements?
You want to install lighting for streets,
paths and for public spaces?
But you want all installations to have a uniform design?

We provide the solution which meets your requirements.

DALVIK – Your city will love them ...

DALVIK S DOUBLE



DALVIK wall mounted luminaire

CITY ELEMENTS 230 DALVIK S

DALVIK S

DALVIK DESIGN

DALVIK. Aesthetic and individuality.

The sophisticated design of the DALVIK is reflected in the very compact construction of this pole-mounted luminaire.

The DALVIK consists of a very flat, rectangular, cast-aluminium luminaire head – and it is available in 2 variants – as DALVIK S and as DALVIK R.

DALVIK S

The design of DALVIK S is characterised by two shadow gaps running continuously around the housing.





DALVIK R

The DALVIK R is even more exclusive.
Its continuous design bracket made of brushed stainless steel is truly eye-catching.

Whatever choice you make – both DALVIK variants are guaranteed to give your city, your path, or your area a most attractive appearance.

DALVIK – Your city will love them ...



Focus Open 2014

DALVIK S and DALVIK R

An impressive appearance – whether day or night.

For its outstanding design, the DALVIK luminaire was voted the “Iconic Awards 2014 – WINNER” in the “Product / Building Technology” category as part of the international ICONIC AWARDS design competition.

The expert jury of this year’s Baden-Württemberg international design prize, awarded the “Focus Silver 2014”. This prize is seen as an acknowledgement of the high quality of the product development according to international standards.

Both prizes acknowledge the independent expression of design typical for Hess and the high-quality finish of our luminaires.



DALVIK FLEXIBILITY

DALVIK. Flexibility in perfection.

Whether third-party or Hess poles.
Whether with a small or large diameter.
Or even several fittings in combination
with Hess' City Elements.

We offer the most varied pole connections and thus
ensure a particularly broad application range.

DALVIK is optimally suited for third-party poles with
various adapters. This makes DALVIK the ideal choice
for retro-fitting existing lighting installations.

The DALVIK can also be mounted to Hess poles with
diameters ranging from 60 – 230 mm.

In combination with Hess' multifunctional
CITY ELEMENTS illuminating column,
several fittings at different positions
are possible. In this way, various
light source heights and
lighting functions can
be combined using one pole.

DALVIK – Your city will love them ...

THIRD-PARTY POLES S/R

Spigot \varnothing 76,1/60,3 mm



HESS POLES S/R

Spigot \varnothing 82,5 mm



Spigot \varnothing 88,9 mm



Spigot double \varnothing 88,9 mm



CITY ELEMENTS

DALVIK S adaptor 230/180



DALVIK S Wall bracket

Wall adaptor



DALVIK

FUNCTIONALITY AND TECHNOLOGY

DALVIK.

Functionality and technology – just as you require it.

Transform any DALVIK into your DALVIK.

Technical fittings are made entirely according to your wishes and requirements.

With one simple objective in mind:
To always deliver the best light.

A choice of 1 to 3 LEVO Q modules, each providing a system capacity of 30 watts, can be fitted. The modules are available with rotationally symmetrical or asymmetrical optics. Cluster optics of polymethyl methacrylate (PMMA) ensure optimum light control.

The light colours 3000 K, 4000 K and, upon request, 5600 K are available.

DALVIK – Your city will love them ...

3 x LEVO Q asymmetric



1 x LEVO Q asymmetric

HESS DIMMING SYSTEMS

For needs-based control of the light, the DAVLIK luminaire can be connected to various control systems by Hess. DIMPro for example, allows for an individually adaptable control of the light intensity. You will continue to benefit from this additional efficiency increase for a long time.

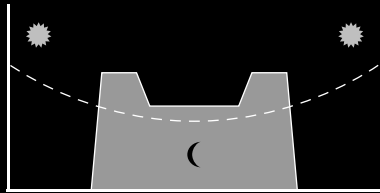
The simple and efficient maintenance concept allows for quick and easy replacement of the LED modules.



DALVIK R

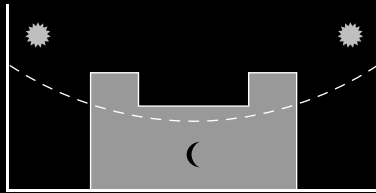
DALI

The controller fitted as standard with a DALI interface can easily be integrated into a DALI controlled lighting system.



StepDIM

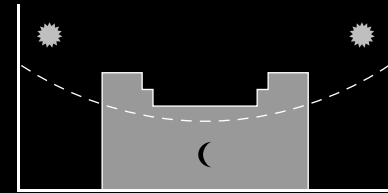
The luminaires' factory default programming is intended for single-stage night-time dimming (30, 50, or 70 %). The control is integrated in the ballast and operates via an additional 230 V control lead.



AstroDIM

The customer can specify up to two night-time dimming stages (for example 80 % and 40 %) over a continuous dimming range from 10 to 100 %. The relevant values are preset at the factory.

The driver determines the theoretical midnight time based on switch-on and switch-off and dims to preset times before and after this theoretical midnight. This is a self-contained and stand-alone system which requires no additional equipment.



DIMPro

With the addition of a movement detector and an antenna in the luminaire housing plus an external master module equipped with GPS an intelligent dimming schedule can be implemented. The master module transmits location, date and time to other luminaires in the system. The system's data can be remotely accessed and new software versions uploaded if required.

The LED luminaires offer one night-time dimming stage (10 – 100 %) along with the capacity to add a second, freely defined level, for example if a car passes in the street.

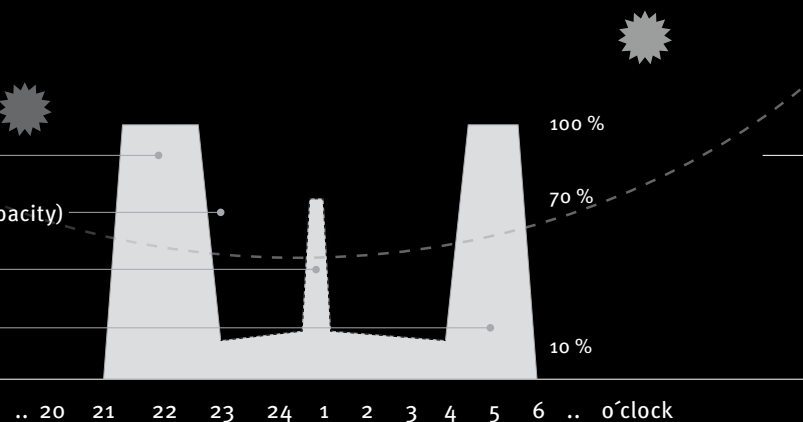
The luminaires can be pre-programmed or programmed on site.

Evening (high volume of traffic, e.g. 100 % capacity)

Night-time dimming (low traffic volume, e.g. from 11 p.m. onwards, to 10 % capacity)

Event (e.g. 70 % capacity, temporary)

Morning (high volume of traffic, e.g. 100 % capacity)



MODULE LEVO Q

The LEVO Q module is available with symmetrical and asymmetrical light distribution. The LEVO Q module is an extension of the LEVO family and offers comprehensive applications for the homogeneous illumination of streets, public spaces and urban areas.

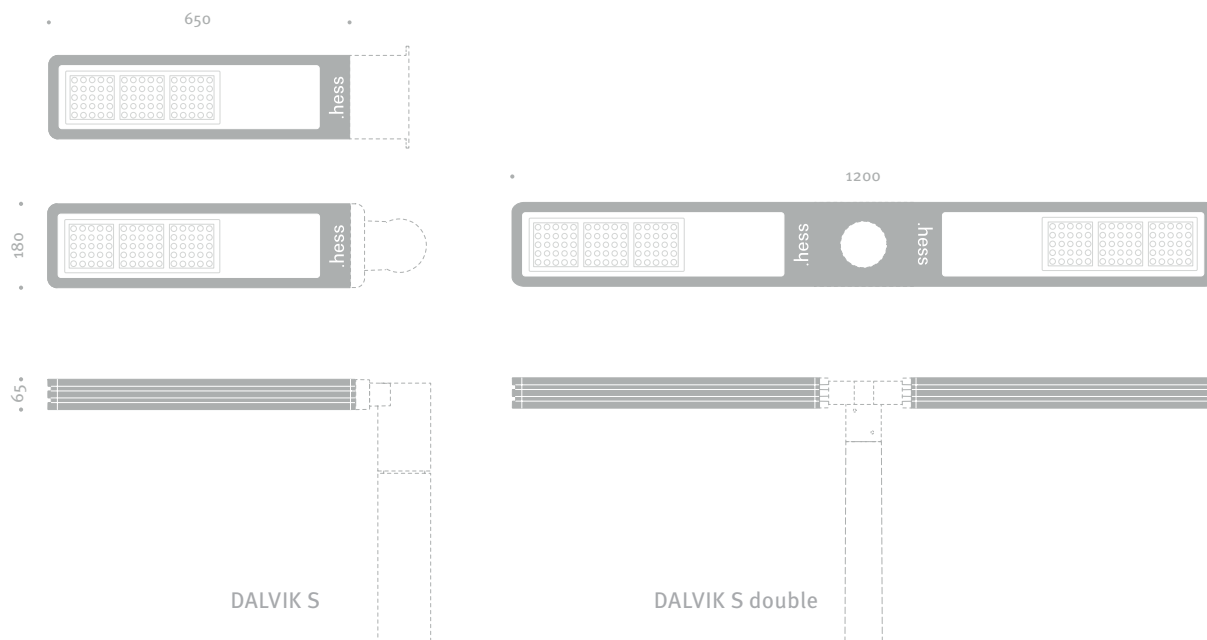
Optics for public space and path illumination
rotationally symmetrical



Optics for wide roads and paths
asymmetrical (ME optics), deep-wide distribution



Dimensions in mm:

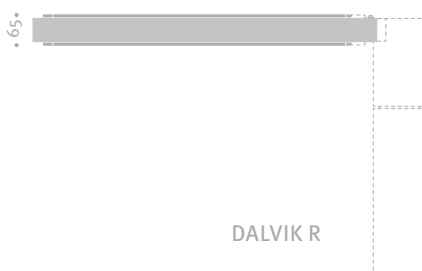
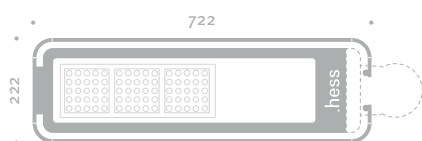




Equipment LEVO Q-Module (in extracts)

| | 1 x LEVO Q-Module | 2 x LEVO Q-Module | 3 x LEVO Q-Module |
|--|---|------------------------|--------------------------|
| Optics | PMMA cluster optics | PMMA cluster optics | PMMA cluster optics |
| Number of LEDs | 25 | 50 | 75 |
| Colour temperature [K] | 3.000 / 4.000 / 5.600* | 3.000 / 4.000 / 5.600* | 3.000 / 4.000 / 5.600* |
| Colour rendering index CRI | 82 / 75 / 70 | 82 / 75 / 70 | 82 / 75 / 70 |
| Operating current [mA] | 350 | 350 | 350 |
| Recommended mounting height [mm] | 4000 - 6000 | 4000 - 6000 | 6000 - 8000 |
| Dimming | DALI / StepDIM / AstroDIM / DIMPro | | |
| Rated ambient temperature | 25°C | | |
| Service life (h) at 70 % luminous flux | > 50.000 (L70 / B10) | | |
| Use suited to lighting class | S5, S6, ME6 | S4, S5, S6, ME5, ME6 | S3, S4, S5, S6, ME5, ME6 |
| Note | operation of the LED module with this ballast with 350 mA (max.500mA) depending on the luminaire. | | |

* colour temperature 5,600 K upon request



Technical product details

Daily updated data sheets for all products are available on the Hess website (www.hess.eu). They include all relevant performance information for LED-equipment.



Direct link:
DALVIK data sheet PDF



www.hess.eu



www.hessamerica.com



www.nordeon-group.com



www.hess.eu/dalvik



HESS ENHANCING URBAN SPACES

Thanks to an extremely varied range of luminaires, Hess is able to fulfil every lighting design requirement in outdoor public spaces, as well as interior and exterior architectural lighting. Perfectly matching, high-quality site furnishings complete the product portfolio.

Light and form are part of our company name, and thus firmly anchored in our corporate philosophy and our very genes. Hess stands for the very best lighting solutions and an unparalleled expression of design. The perfect interplay of light and form is what makes our products unique.

Combining lighting and furnishings to optimum effect allows integrated concepts and customised special solutions to be implemented across urban and outdoor spaces in line with the Hess slogan “enhancing urban spaces“.

Combining design, innovation and tradition has made Hess to a leading international brand. We support and assist architects, designers, cities, communities, and building owners from the planning stage through to installation – throughout Europe and beyond.

With the main factory located in Villingen-Schwenningen (Germany), there is also a manufacturing site in Gaffney, South Carolina (USA). Hess has been a subsidiary of the Nordeon Group since 1 October 2013.



Hess GmbH Licht + Form
Lantwattenstraße 22
GER - 78050 Villingen-Schwenningen
Tel: +49 (0) 7721 920-0
E-Mail: hess@hess.eu
www.hess.eu



© Hess GmbH Licht + Form 2016

All rights reserved.